

TM5

The most intelligent
Collaborative robot

With built-in vision

TM5-700



Reach



Reach

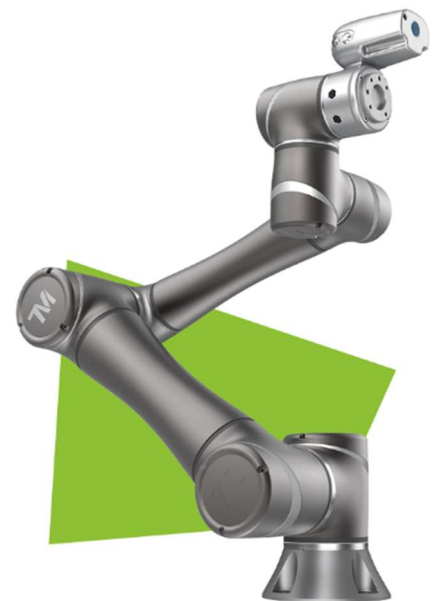


Payload



Payload

TM5-900



Applicable For 3c Industry, Automobile Industry, Food Industry, Etc.

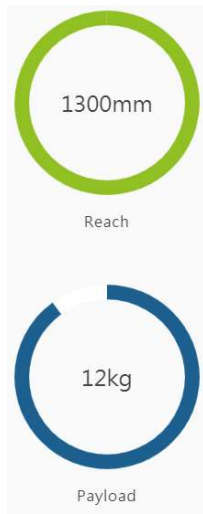
Model	TM5-700	TM5-900	TM5M-700	TM5M-900
Weight	22.1Kg	22.6Kg	22.1Kg	22.6Kg
Payload	6kg	4kg	6kg	4kg
Reach	700mm	900mm	700mm	900mm
Typical Speed	1.1m/s	1.4m/s	1.1m/s	1.4m/s
Joint ranges	J1	+/- 270°		
	J2,J4,J5	+/- 180°		
	J3	+/- 155°		
	J6	+/- 270°		
Speed	J1~J2	180°/s		
	J3	180°/s		
	J4~J5	225°/s		
	J6	225°/s		
Repeatability	+/- 0.05 mm			
Degrees of freedom	6 rotating joints			
I/O ports	Control box		Tool conn.	
	Digital in	16	Digital in	3/4 (by Regional Model)
	Digital out	16	Digital out	3/4 (by Regional Model)
	Analog in	2	Analog in	1
Analog out	1	Analog out	0	
I/O power supply	24V 1.5A for control box and 24V 1.5A for tool			
IP classification	IP54 (Robot Arm); IP32 (Control Box)			
Power Consumption	Typical 220 watts			
Temperature	The robot can work in a temperature range of 0-50°C			
Power supply	100-240 VAC, 50-60 Hz		DC24V/48V/22~60V (by Reginal Model)	
I/O Interface	3×COM, 1×HDMI, 3×LAN, 4×USB2.0, 2×USB3.0, 1×VGA (by Reginal Model)			
Communication	RS232, Ethernet, Modbus TCP/RTU (master & slave)			
Programming Environment	TMflow, flowchart based			
Certification	CE (by Regional Model), SEMI S2 (Option)			
Variation Models	X: without hand eye camera, SEMI: SEMI S2 certified			
Robot Vision				
Eye in Hand (Built in)	1.2M/5M pixels, color camera			
Eye to Hand (Optional)	Support Maximum 2 GigE cameras			



TM12/TM14

High payload with
extended reach

TM12



TM14



The Highest Load Capability In The TM Product Series

Applicable for semiconductor industry, panel industry, CNC industry, etc.

Model	TM12	TM14	TM12M	TM14M	
Weight	33.3Kg	32.6Kg	33.3Kg	32.6Kg	
Payload	12kg	14kg	12kg	14kg	
Reach	1300mm	1100mm	1300mm	1100mm	
Typical Speed	1.3m/s	1.1m/s	1.3m/s	1.1m/s	
Joint ranges	J1	+/- 270°			
	J2,J4,J5	+/- 180°			
	J3	+/- 166°	+/- 163°	+/- 166°	+/- 163°
	J6	+/- 270°			
Speed	J1~J2	120°/s			
	J3	180°/s			
	J4~J5	180°/s	150°/s	180°/s	150°/s
	J6	180°/s			
Repeatability	+/- 0.1 mm				
Degrees of freedom	6 rotating joints				
I/O ports	Digital in	Control box 16		Tool conn. 4	
	Digital out	16		4	
	Analog in	2		1	
	Analog out	1		0	
I/O power supply	24V 1.5A for control box and 24V 1.5A for tool				
IP classification	IP54 (Robot Arm); IP32 (Control Box)				
Power Consumption	Typical 300 watts				
Temperature	The robot can work in a temperature range of 0-50°C				
Power supply	100-240 VAC, 50-60 Hz		DC 22V~60V		
I/O Interface	3×COM, 1×HDMI, 3×LAN, 4×USB2.0, 2×USB3.0				
Communication	RS232, Ethernet, Modbus TCP/RTU (master & slave)				
Programming Environment	TMflow, flowchart based				
Certification	CE, SEMI S2 (Option)				
Variation Models	X: without hand eye camera, SEMI: SEMI S2 certified				
Robot Vision					
Eye in Hand (Built in)	1.2M/5M pixels, color camera				
Eye to Hand (Optional)	Support Maximum 2 GigE cameras				



Accessory



Air Fitter



External Power Supply



TECHMAN SSD



TM Calibration Pin



TM Calibration Plate



TM Calibration Set



TM End Module IO cable



TM Landmark



TM Mobile Workstation



TM Robot Stand



TM Robot Stick Stand

Built-In Vision System

TM Vision is a built-in system that provides the user with friendly programming functions such as vision recognition, positioning, image enhancement, barcode identification, and so on.



Item detection module

Supports shape-based and image-based pattern matching



Image enhancement module

Supports contrast enhancement, image smoothing, morphology, and color plane extraction Barcode identification module.



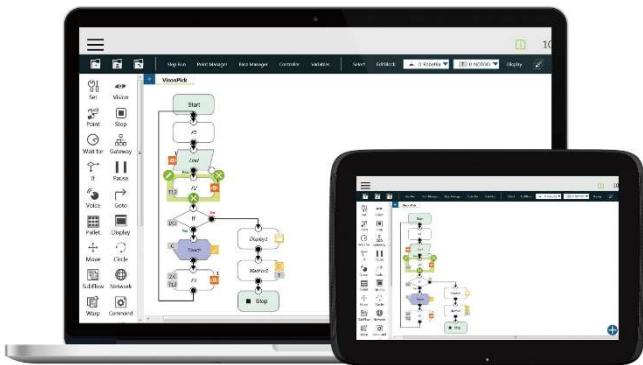
Barcode identification module

Supports 1-Dashboard, QR code and 2-D DataMatrix decoding.



TMflow No More Coding!

You can implement your automation task with our innovative flow-based robot editing software. Each function is shown as a different icon and also features an intuitive click & drag method. Users without any coding experience can complete a pick & place program in as little as 5 minutes.

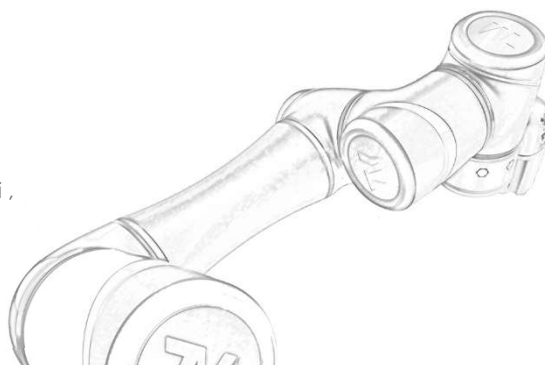


899/50 Moo 21 , Soi Chongsiri Parkland , Bangphi – Yai ,
Bangphil , Samutprakarn 10540 Thailand

Email : info@connexall.co.th

Tel : +66 2 313 3400

Fax : +66 2 313 3402



WWW.CONNEXALL.CO.TH