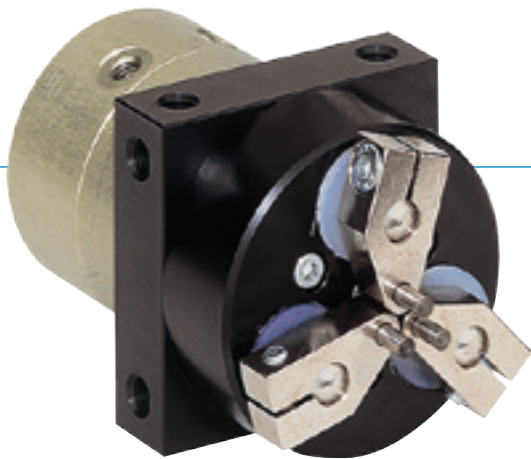


3-JAW CONCENTRIC GRIPPERS

SERIES GD




▶ PRODUCT ADVANTAGES



“The flexible”

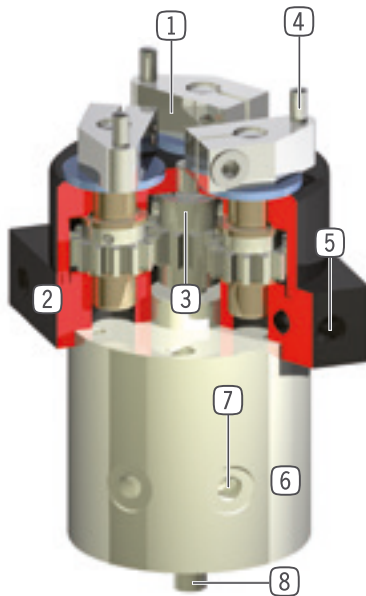
- ▶ **Largest stroke in small installation space**
You can cover numerous application variants with just one gripper type
- ▶ **Gripper jaws included in the delivery**
Reduces your design effort, manufacturing costs and setup time
- ▶ **Smooth stroke configuration**
Using the optionally available stroke limit, you can customise the stroke to your application, even stroke sensing is possible

▶ SERIES CHARACTERISTICS

Installation size		
GDXX		
 10 million maintenance-free cycles (max.)		●
 Inductive sensor		●
 IP 40		●



► BENEFITS IN DETAIL



- ① **Gripping movement on rotation**
 - for various workpiece diameters
- ② **Robust, lightweight housing**
 - Hard-coated aluminum alloy
- ③ **Planetary transmission**
 - synchronized the movement of the gripper jaws
- ④ **Standard pins serve as gripper jaw**
- ⑤ **Mounting and positioning**
 - mounting possible from several sides for versatile positioning
- ⑥ **Drive**
 - double-acting pneumatic cylinder
- ⑦ **Energy supply**
 - possible radial and axial
- ⑧ **Shaft projection**
 - for accessory assembly e.g. sensors

► TECHNICAL DATA

Installation size	Stroke [°]	Gripping moment [Nm]	Weight [kg]	IP class
GD1	130	0,12	0.08	IP40
GD10	180	1	0.35	IP40
GD50	120	9	2	IP40

► FURTHER INFORMATION IS AVAILABLE ONLINE



All information just a click away at: www.zimmer-group.com. Find data, illustrations, 3D models and operating instructions for your installation size using the order number for your desired product. Quick, clear and always up-to-date.

3-JAW CONCENTRIC GRIPPERS

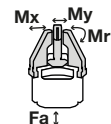
INSTALLATION SIZE GD10

► PRODUCT SPECIFICATIONS



► Forces and moments

Displays static forces and moments that can also have an effect, besides the gripping force.



Mr [Nm]	1
Mx [Nm]	1
My [Nm]	0.5
Fa [N]	30

► RECOMMENDED ACCESSORIES



ENERGY SUPPLY



GVM5
Straight Fittings - Quick Connect Style



DEV04
Quick Exhaust Valve



DSV1-8
Pressure safety valve



ENERGY SUPPLY



DSV1-8E
Pressure safety valve with quick exhaust



CONNECTIONS / OTHER



DB10
Rotation limiter

► RECOMMENDED ACCESSORY ROTATION LIMITER



NJ12-E2
Inductive proximity switch - Cable 5 m



NJ12-E2S
Inductive proximity switch - Connector M8



AI-M8X1-38
Stop Stroke Adjustment Screws



AI-M8X1-53
Stop Stroke Adjustment Screws



KAG500
Plug-in connector Straight Cable 5m - Socket M8 (female)

	► Technical data
Order no.	GD10
Stroke per jaw [°]	180
Gripping diameter in closing min. [mm]	5
Gripping diameter in closing max. [mm]	45
Gripping diameter in opening min. [mm]	11
Gripping diameter in opening max. [mm]	51
Gripping moment in closing [Nm]	1
Gripping moment in opening [Nm]	1
Closing time [s]	0.07
Opening time [s]	0.07
Repetition accuracy +/- [mm]	0.05
Operating pressure min. [bar]	3
Operating pressure max. [bar]	8
Nominal operating pressure [bar]	6
Operating temperature min. [°C]	5
Operating temperature max. [°C]	+60
Air volume per cycle [cm³]	20
Protection to IEC 60529	IP40
Weight [kg]	0.35

