

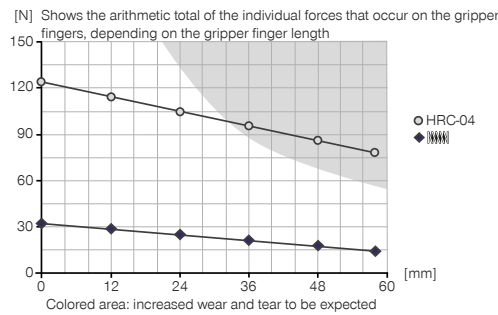
2-JAW PARALLEL GRIPPERS

HRC-04-080644

▶ PRODUCT SPECIFICATIONS

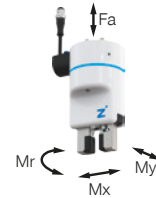


▶ Gripping force diagram



▶ Forces and moments

Displays static forces and moments that can also have an effect, besides the gripping force.



| | |
|---------|-----|
| Mr [Nm] | 4 |
| Mx [Nm] | 14 |
| My [Nm] | 5 |
| Fa [N] | 330 |

▶ TECHNICAL DATA

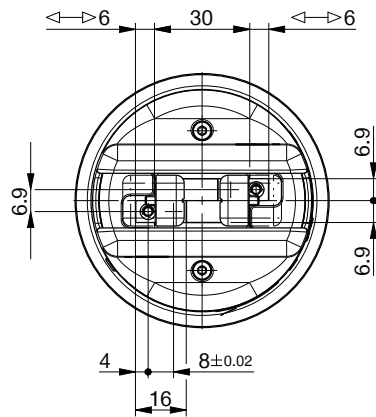
| Order no. | HRC-04-080644 |
|---|--------------------------|
| Suitable for robot type | Yaskawa HC10 / HC10 DT** |
| HRC design according to ISO/TS 15066 | Yes |
| HRC form | collaborative |
| Cable management | internal |
| Type of drive | pneumatic |
| Control | IO-Link |
| Stroke per jaw [mm] | 6 |
| Gripping force safety device | Yes |
| Gripping force in closing [N] | 130 |
| Gripping force in accordance with ISO/TS 15066 [N]* | <140 |
| Gripping force secured by spring min. [N] | 40 |
| Closing time [s] | 0.02 |
| Opening time [s] | 0.04 |
| Repetition accuracy +/- [mm] | 0.025 |
| Integrated valve technology | Yes |
| Integrated position sensing | Using process data |
| Current consumption max. [A] | 0.10 |
| Voltage [V] | 24 |
| Operating pressure min. [bar] | 4 |
| Operating pressure max. [bar] | 8 |
| Nominal operating pressure [bar] | 6 |
| Operating temperature min. [°C] | +5 |
| Operating temperature max. [°C] | +50 |
| Air volume per cycle [cm³] | 5.4 |
| Protection to IEC 60529 | IP40 |
| Weight [kg] | 0.96 |

* Value based on the parameters described in the ISO/TS 15066, determined with a force measuring device certified by the DGUV (German Social Accident Insurance)

** Adapter plates required for HC10: APR000026 + APR000027 / Adapter plate required for HC10 DT: APR000027

For more information, refer to our Yaskawa brochure.

▶ TECHNICAL DRAWINGS



- ① Gripper attachment
- ② Energy supply
- ③ Fixing for gripper finger
- ⑤③ Fixing for gripper finger
- ⑤④ Robot mount
- ⑤⑥ Other/auxiliary energy supply

