

AXIS COMPENSATION MODULES

SERIES XYR

▶ PRODUCT ADVANTAGES



▶ Adjustable balancing force and stroke

Using adjusting screws, you can adjust the properties of the equalizer optimally to your application in the shortest amount of time

▶ Flat design

This structure reduces the moment load for your robot to a minimum and makes it possible to use smaller and more affordable sizes

▶ Can be fixed in place centrally or de-centrally

Depending on the requirement, you can clamp or centrally lock the equalizer position. An aid for optimal processes

▶ THE BEST PRODUCT FOR YOUR APPLICATION



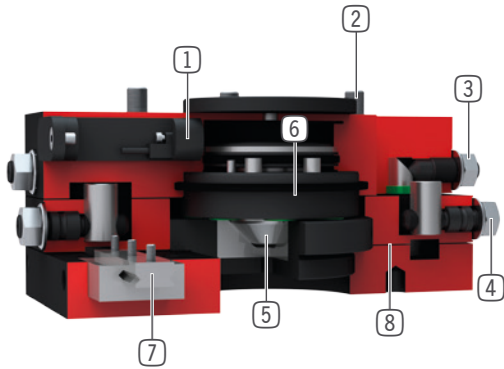
▶ Our products welcome the challenge!

Extreme conditions, all over the world—our tried and tested components and systems give you endless possibilities.

Find the best product for your specific use:

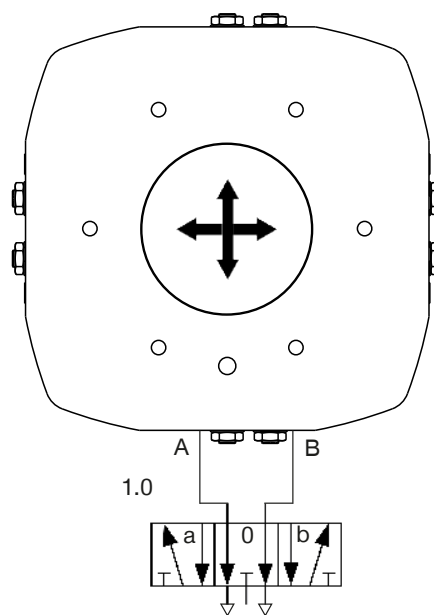
www.zimmer-group.com

► BENEFITS IN DETAIL



- ① **Piston position sensing**
 - via magnetic field sensors
 - included in scope of delivery
- ② **Robust, lightweight housing**
 - Hard-coated aluminum alloy
 - partial mounting circle in accordance with EN ISO 9409-1
 - lowest overall height
- ③ **Compensation force**
 - adjustable via adjustment screw
- ④ **Compensation stroke**
 - infinitely variable
- ⑤ **Locking piston**
 - central via cone
- ⑥ **Eccentric locking**
 - via pneumatic piston with frictional contact
- ⑦ **Linear guide**
 - for highest force and moments capacity
- ⑧ **Compensation plate**
 - to balance position errors in XY- direction

► PNEUMATIC PLANS



| Valve | Status | Locking piston locked | Locking piston unlocked | Eccentric clamping activated | Eccentric clamping deactivated |
|-------|--------|-----------------------|-------------------------|------------------------------|--------------------------------|
| 1.0 | a | █ | █ | █ | █ |
| | 0 | █ | █ | █ | █ |
| | b | █ | █ | █ | █ |

AXIS COMPENSATION MODULES

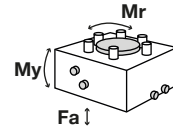
INSTALLATION SIZE XYR1125

▶ PRODUCT SPECIFICATIONS



▶ Forces and moments

Shows static forces and moments



| | |
|---------|------|
| Mr [Nm] | 150 |
| My [Nm] | 150 |
| Fa [N] | 3600 |

▶ INCLUDED IN DELIVERY



Mounting block

KB8K



Cylinder Screw

C7984100209

▶ RECOMMENDED ACCESSORIES



Alternate proximity bracket

KHA1000-8



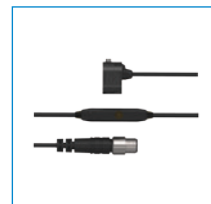
Inductive proximity switch - Connector M8

NJ8-E2S



Straight Fittings - Quick Connect Style

GV1-8X8



Piston position sensing

ZUB088931



Inductive proximity switch - Cable 5 m

NJ8-E2



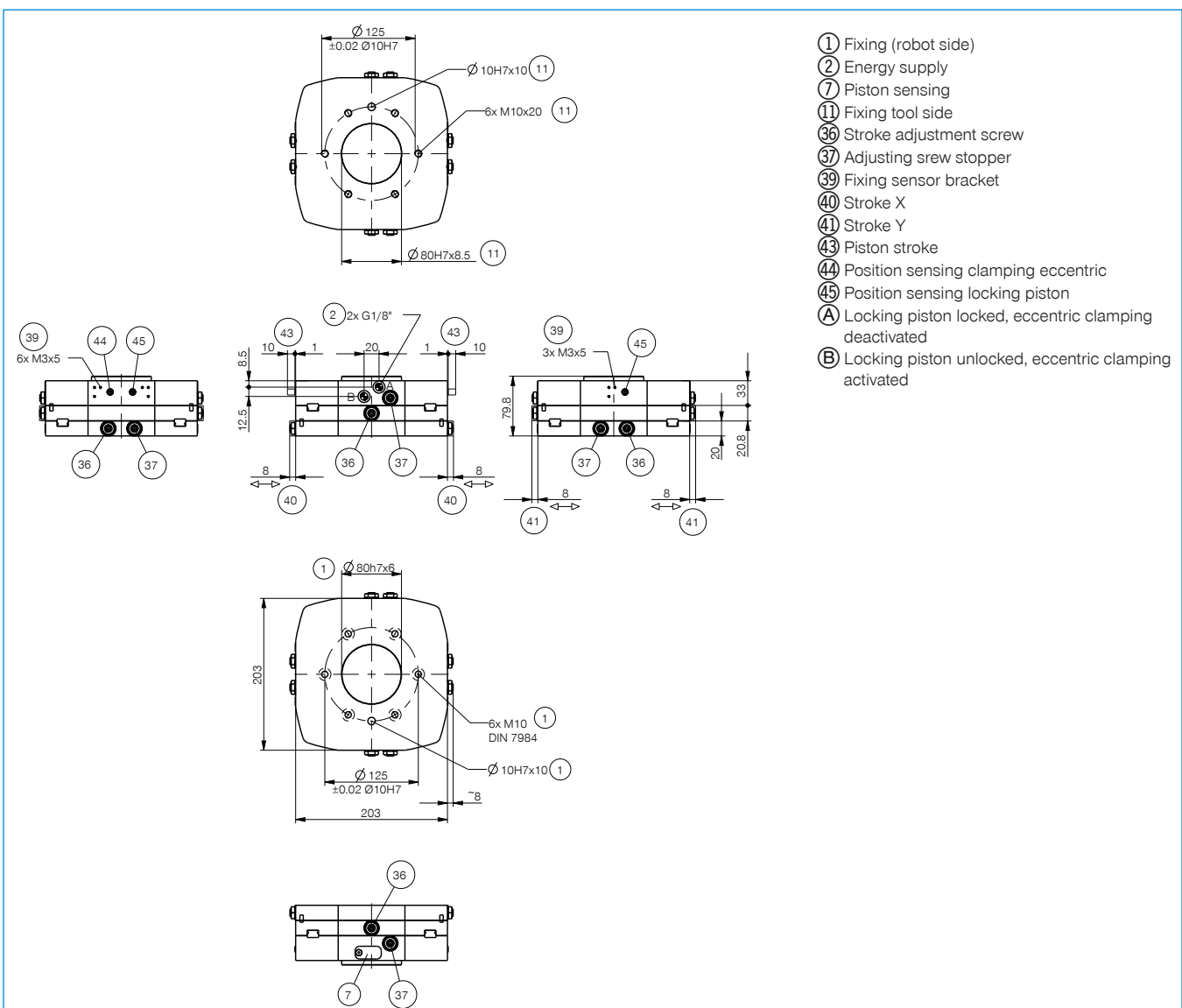
Angled Fittings - Quick Connect Style

WV1-8X8

| Order no. | Technical Data* |
|---|-----------------|
| Connecting flange according EN ISO 9409-1 | TK 125 |
| Recommended handling weight [kg]** | 45 |
| Stroke X/Y level +/- [mm] | 8 |
| Retention force centred [N] | 900 |
| Retention force decentred [N] | 500 |
| Operating pressure max. [bar] | 8 |
| Operating temperature min. [°C] | 5 |
| Operating temperature max. [°C] | +80 |
| Air volume per cycle [cm³] | 31 |
| Moment of inertia [kg/cm²] | 585 |
| Weight [kg] | 8.9 |

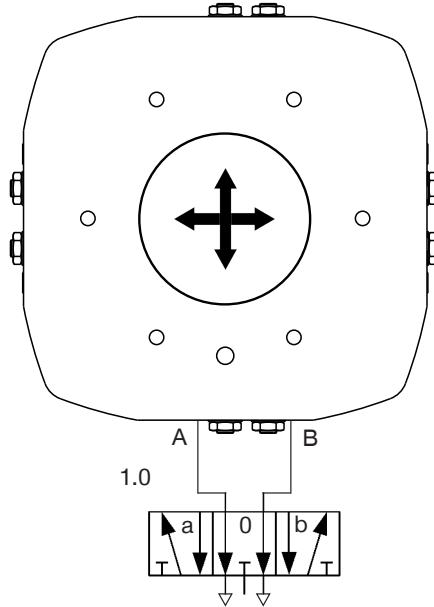
*All data measured at 6 bar

**with central attachment



AXIS COMPENSATION MODULES SERIES XYR

► PNEUMATIC PLANS



| Valve | Status | Locking piston locked | Locking piston unlocked | Eccentric clamping activated | Eccentric clamping deactivated |
|-------|--------|-----------------------|-------------------------|------------------------------|--------------------------------|
| 1.0 | a | High | Low | High | Low |
| | 0 | Low | High | Low | High |
| | b | Low | Low | High | High |